

Lighting the way to a brighter future...



# Child Care Works for Somerset

## CONSTRUCTION UPDATE

# THANK YOU!

YOUR INVESTMENT CREATES  
A BRIGHTER FUTURE FOR  
LOCAL CHILDREN.



Child care is essential for parents with young children. Without it, they can't go to work or school. As of January 2023, The Learning Lamp's Somerset child care center provides care for workers from more than 11 of the county's top 50 employers and serves workers from more than 60 employers in all.

## "WANT TO GROW THE ECONOMY? FIX THE CHILD CARE CRISIS."

- COUNCIL FOR A STRONG AMERICA

### PHASE 1

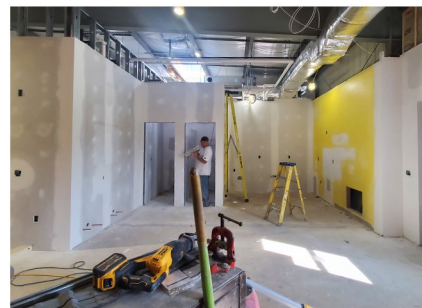
Former racquetball courts have been transformed into preschool classrooms and a gross motor activity room. New doors, windows, plumbing, HVAC equipment and electrical systems have been installed. Phase 1 is complete!

### PHASE 2

In Phase 2, we will expand the infant classroom and add new windows in that space as well as create a school-age classroom. This phase will also include new administrative space, new bathrooms, laundry room and kitchen area. Phase 2 is complete!

### PHASE 3

The final phase includes the renovation of existing classrooms to include new bathrooms and kitchen areas. The space will have 3-year-old and 4-year-old classrooms as well as a gross motor space. New entrance hall flooring, updated entryways to classrooms, a newly paved parking lot, landscaping, and new exterior signage will follow. Phase 3 will be completed in mid 2023.





## SOMERSET PROJECT COMPARE AND CONTRAST

### CURRENT CENTER



4,840 usable sq. ft.  
Limited storage  
Limited office space  
Outdated bathroom facilities  
Portable hand washing stations  
No kitchen/employee area  
One playground  
Dark, windowless infant classroom  
Potholes and gravel  
No landscaping  
Outdated signage

### UPDATED CENTER

6,781 usable sq. ft.  
Storage closets in classrooms  
Updated modern office area  
New child-sized restrooms in classrooms  
Plumbing for permanent sinks in classrooms  
Modernized kitchen/employee area  
Two updated playgrounds with classroom access  
Large updated nursery with windows  
Newly paved parking lot  
New landscaping  
New exterior signage



## CAMPAIGN STATUS

Since launching the **Child Care Works for Somerset** campaign, The Learning Lamp raised over \$2.1 million or 90% of the renovation costs. Once completed, the center will accommodate 134 children. Working families with young children, business and industry, and the region's economy are counting on all of us to complete this valuable work.

*Together, let's build a foundation for the future for Somerset's workers and their children.*



## SCHEDULE A VISIT!

CONTACT KATHLEEN MORRELL AT 814-262-0732 x233.  
FOR MORE INFORMATION, CLICK ON THE QR CODE TO  
VISIT OUR WEBSITE.

